

*Specialized  
care to meet  
your needs*



**CHRONIC  
OBSTRUCTIVE  
PULMONARY  
DISEASE  
CARE PROGRAM**



**HospiceCare**  
OF BOULDER AND BROOMFIELD COUNTIES



*“According to a recent study, patients with COPD who are in their last year of life spend nearly a quarter of their remaining time in the hospital. Thanks to this program, we can now offer our COPD patients a very high level of care, right in their homes, so they don’t have to suffer the episodes of fear and crisis that keep landing them in the ER or hospital. That’s why it makes more sense than ever for COPD patients to come to us earlier in their disease process.”*

— DR. MICHELE FERGUSON

HOSPICECARE MEDICAL DIRECTOR

If you're living with the complications of chronic obstructive pulmonary disease (COPD), HospiceCare's COPD program can help. In fact, by closely monitoring your condition to minimize your symptoms, maximize your comfort and reduce your need for hospital visits, our program can actually improve the quality of your life.

Our experienced team of physicians, nurses, social workers, chaplains, and nursing assistants are specially trained to address your unique needs and those of your family. So they can help effectively manage problems such as coughing, mucous, shortness of breath, wheezing, tightness in your chest, and anxiety. The result? With our COPD program, you can regain control of your disease and live every day as fully and comfortably as possible.



### *Minimizing your symptoms, maximizing your comfort*

One of just a few select programs available across the country, HospiceCare's Chronic Obstructive Pulmonary Disease Program was developed with the assistance of a local pulmonologist who recognizes the unique challenges you face. Using these specialized protocols and treatment pathways, HospiceCare's board certified palliative care physicians and staff will work closely with your primary physician to monitor your condition and relieve your shortness of breath and other symptoms. Our aim? To reduce episodes of fear and crisis and avoid hospital stays and ER visits.

### *The right care, right in your home*

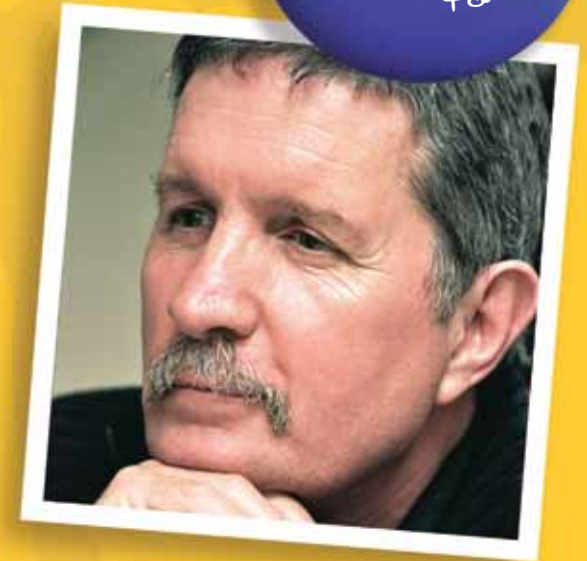
To help you cope with your disease and reach your goals, HospiceCare's COPD Program provides individualized support from an interdisciplinary care team. Your care team includes a nurse, certified nursing assistant, social worker, chaplain, and counselor with specialized training in COPD evaluation and symptom management. They will:

- Provide appropriate medications for your COPD
- Help you monitor your symptoms through the use of a peak flow meter
- Teach you simple techniques to relieve your symptoms, such as controlled coughing, breathing exercises, and postural drainage
- Train your caregiver to perform chest percussion therapy to help clear your mucous
- Help you adjust your diet to minimize symptoms
- Show you additional ways to stay calm and cope with medical challenges

Your team brings this specialized care to your home and is available around-the-clock. For more information on HospiceCare's COPD Program, call 303.449.7740 or visit [www.hospicecareonline.org](http://www.hospicecareonline.org)



*Actually,  
there IS  
something  
we can do*





2594 Trailridge Drive East  
Lafayette, CO 80026  
303.449.7740

[www.hospicecareonline.org](http://www.hospicecareonline.org)